

# RSLogix500 Project Report



Processor Information

---

Processor Type: Bul.1761      MicroLogix 1000 DH-485/HDSlave

Processor Name: 923HOUSE

Total Memory Used: 388 Instruction Words Used - 410 Data Table Words Used

Total Memory Left: 553 Instruction Words Left

Program Files: 17

Data Files: 8

Program ID: 1c16

0 Bul.1761

MicroLogix 1000 DH-485/HDSlave

Channel Configuration

---

DF1 Baud: 9600  
DF1 Node : 1 (decimal)  
DH485 Baud: 19200  
DH485 Node : 1 (decimal)  
Primary Protocol: DF1  
DF1: DF1 Full Duplex

## Program File List

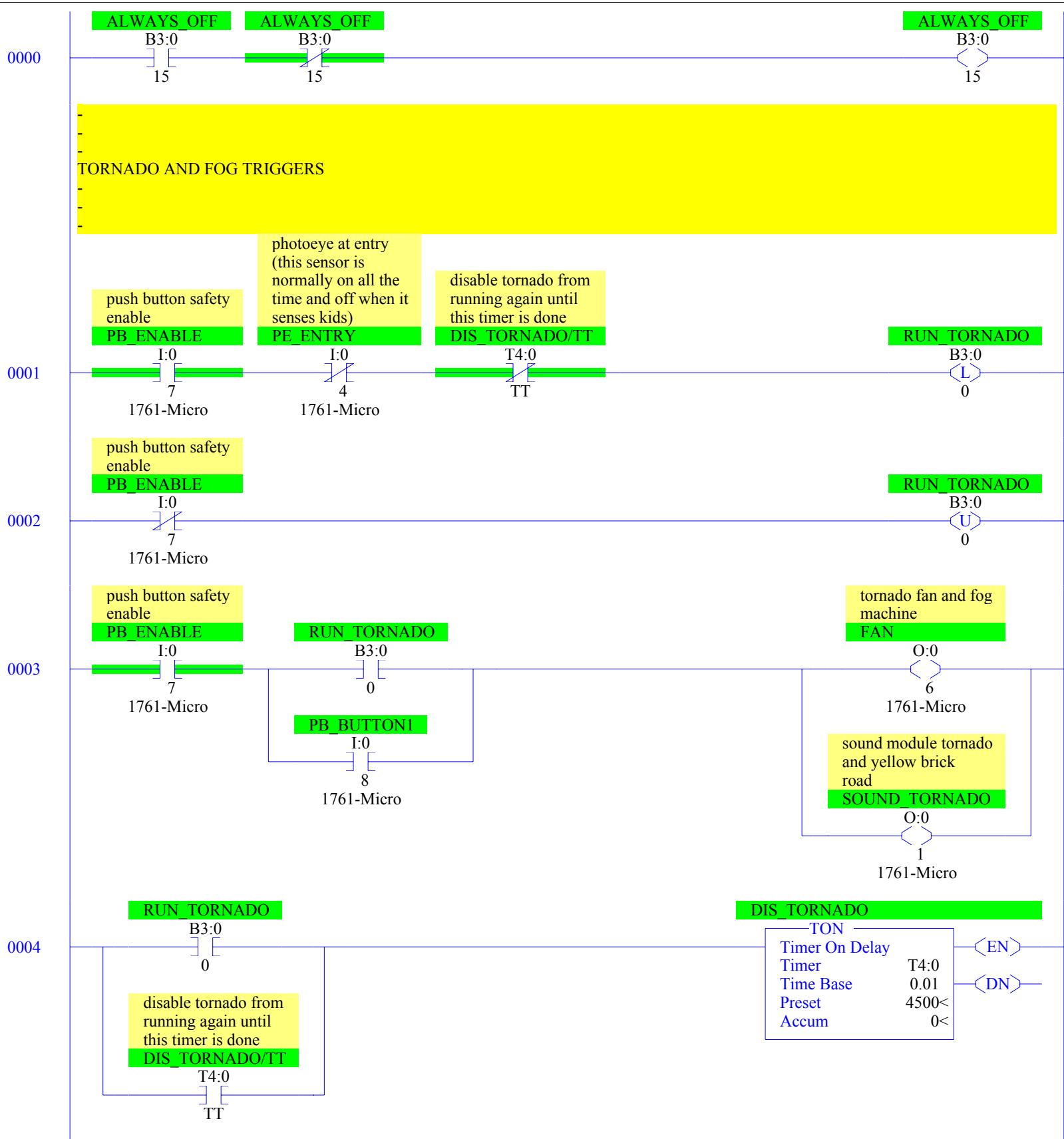
Name	Number	Type	Rungs	Debug	Bytes
[SYSTEM]	0	SYS	0	No	0
	1	SYS	0	No	0
MAIN_PROG	2	LADDER	55	No	1217
USER_FAULT	3	LADDER	1	No	3
HSC_INT	4	LADDER	1	No	3
STI_INT	5	LADDER	1	No	3
	6	LADDER	1	No	3
	7	LADDER	1	No	3
	8	LADDER	1	No	3
	9	LADDER	1	No	3
	10	LADDER	1	No	3
	11	LADDER	1	No	3
	12	LADDER	1	No	3
	13	LADDER	1	No	3
	14	LADDER	1	No	3
	15	LADDER	1	No	3
	16	LADDER	1	Yes	3

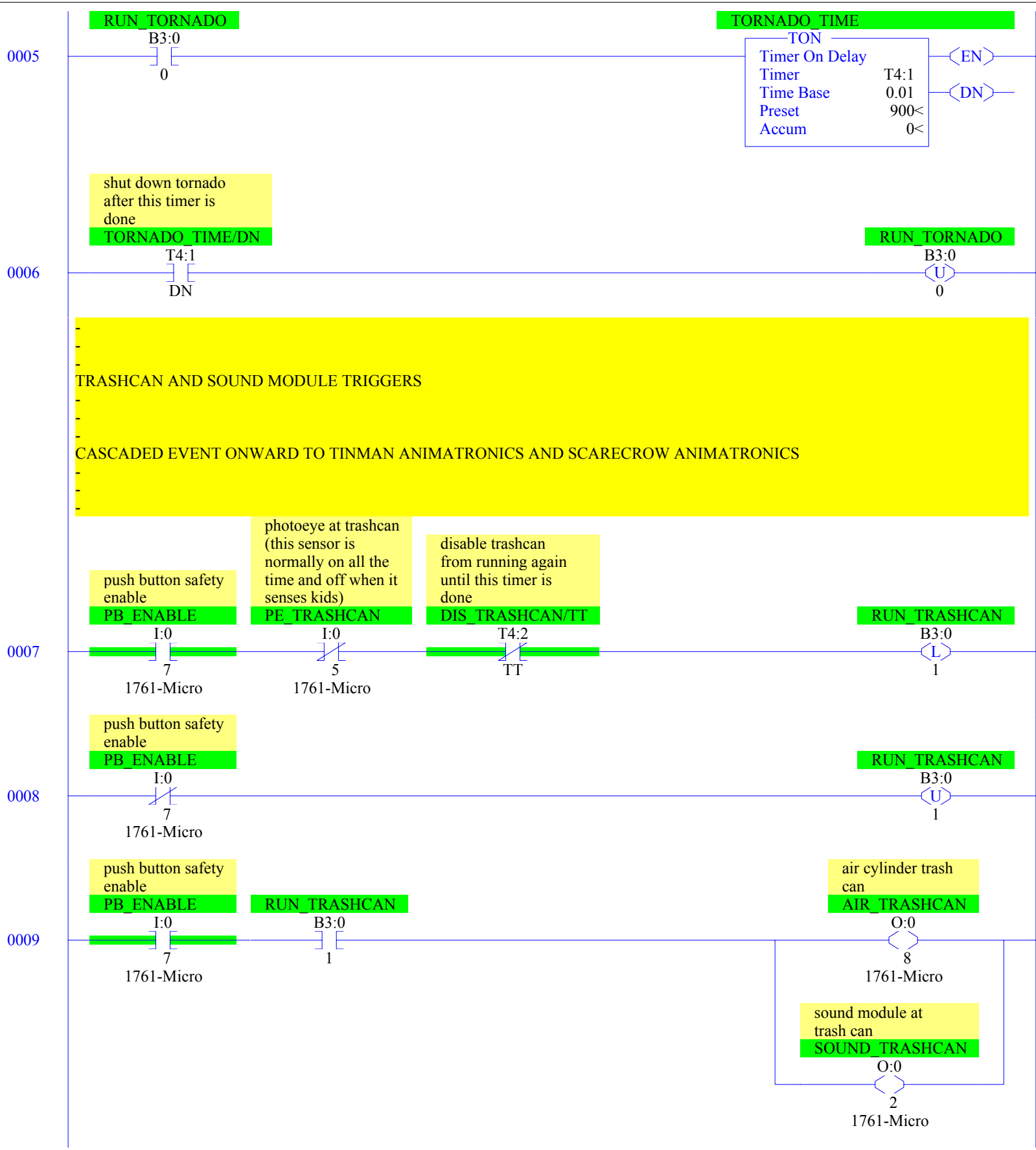
## Data File List

---

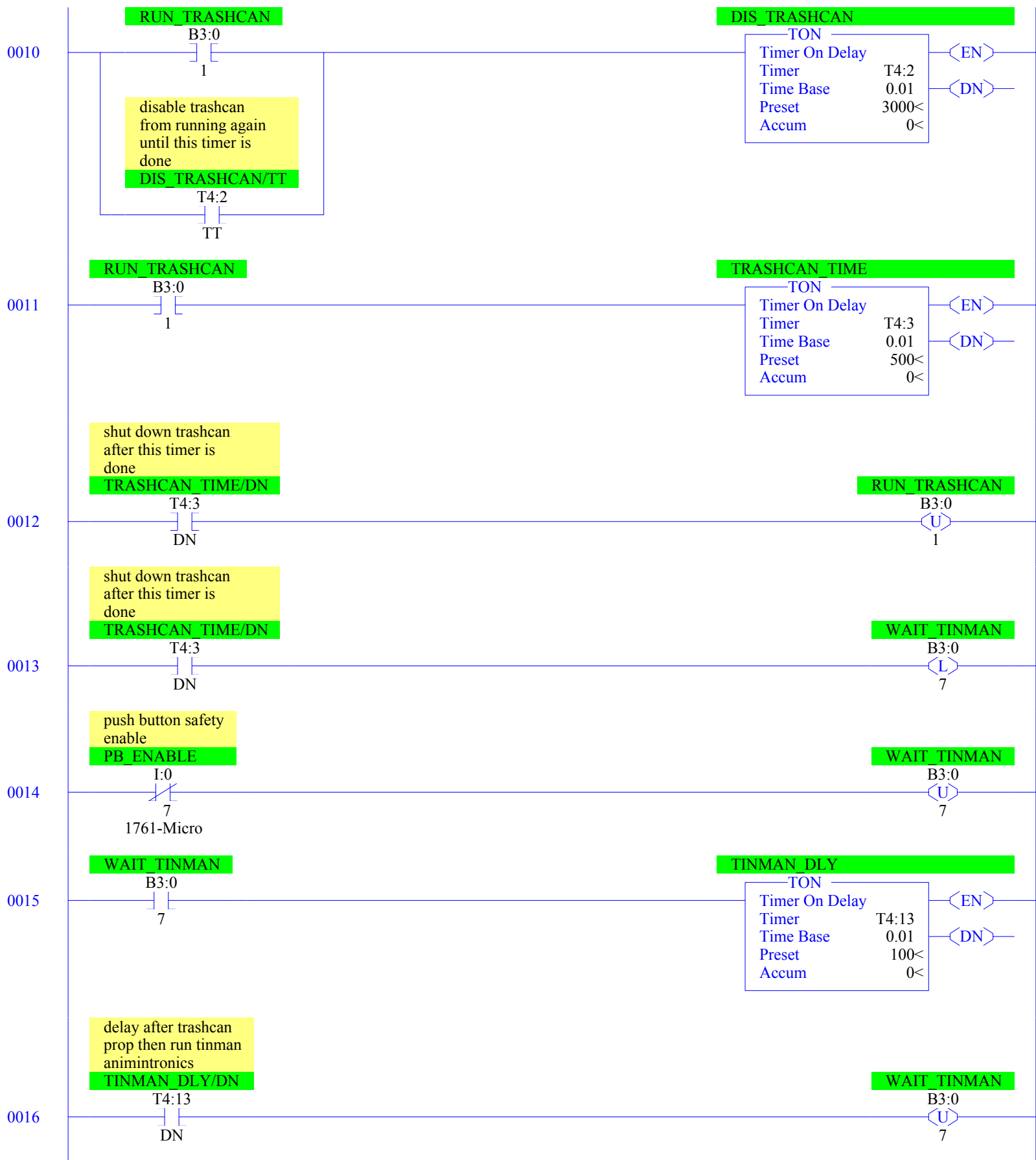
Name	Number	Type	Scope	Debug	Words	Elements	Last
OUTPUT	0	O	Global	No	3	1	O:0
INPUT	1	I	Global	No	6	2	I:1
STATUS	2	S	Global	No	0	33	S:32
BINARY	3	B	Global	No	32	32	B3:31
TIMER	4	T	Global	No	120	40	T4:39
COUNTER	5	C	Global	No	96	32	C5:31
CONTROL	6	R	Global	No	48	16	R6:15
INTEGER	7	N	Global	No	105	105	N7:104

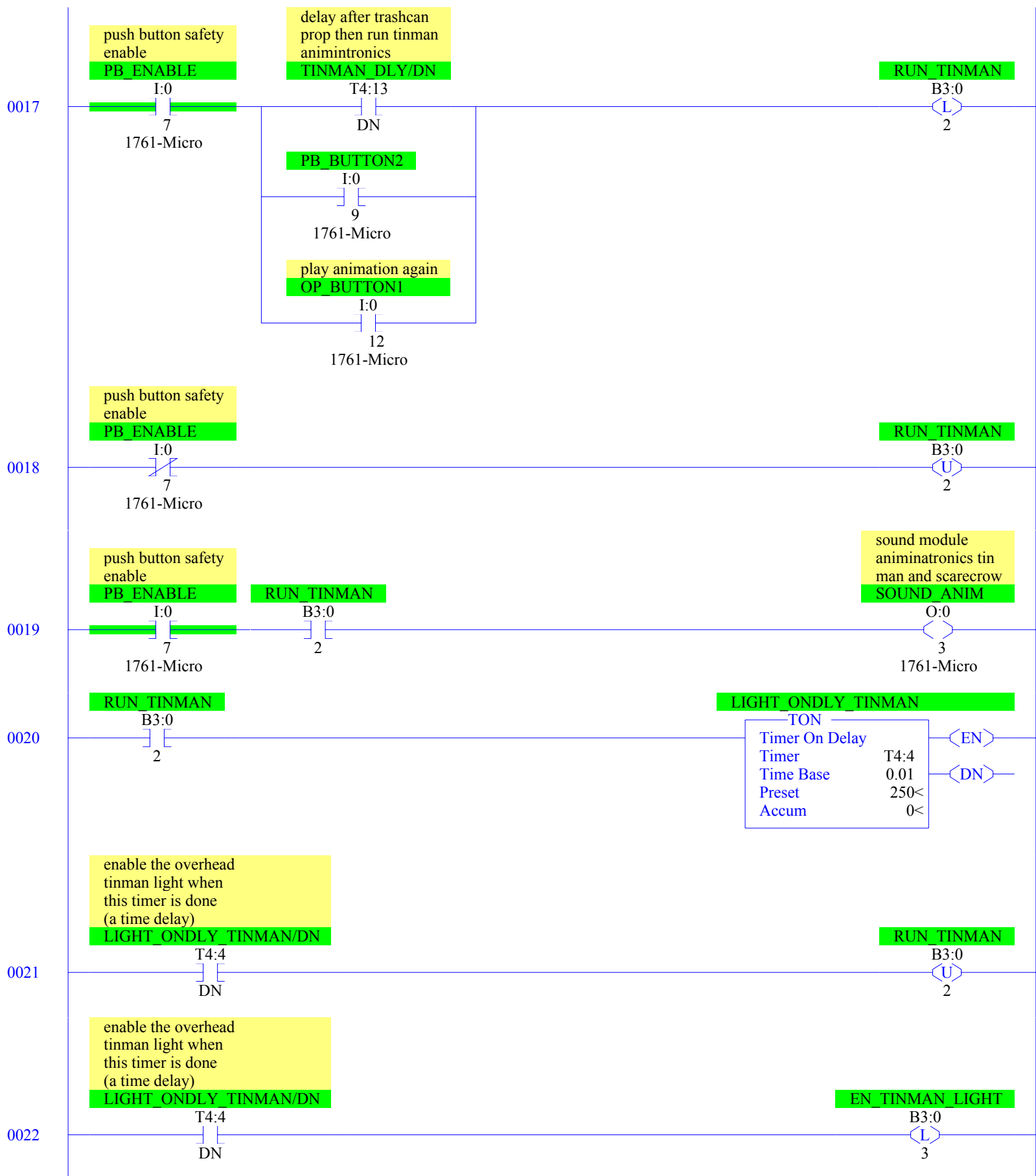
---

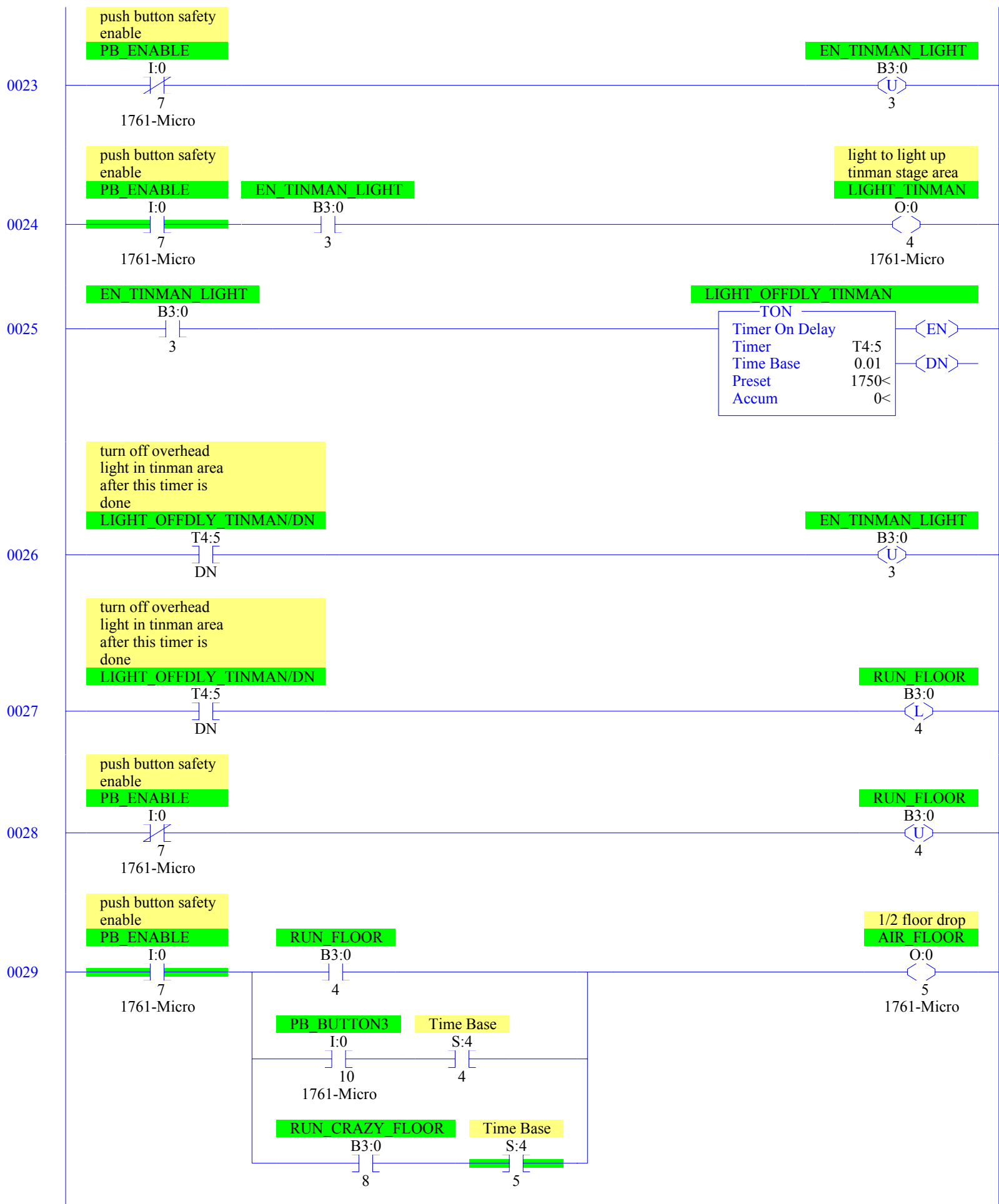


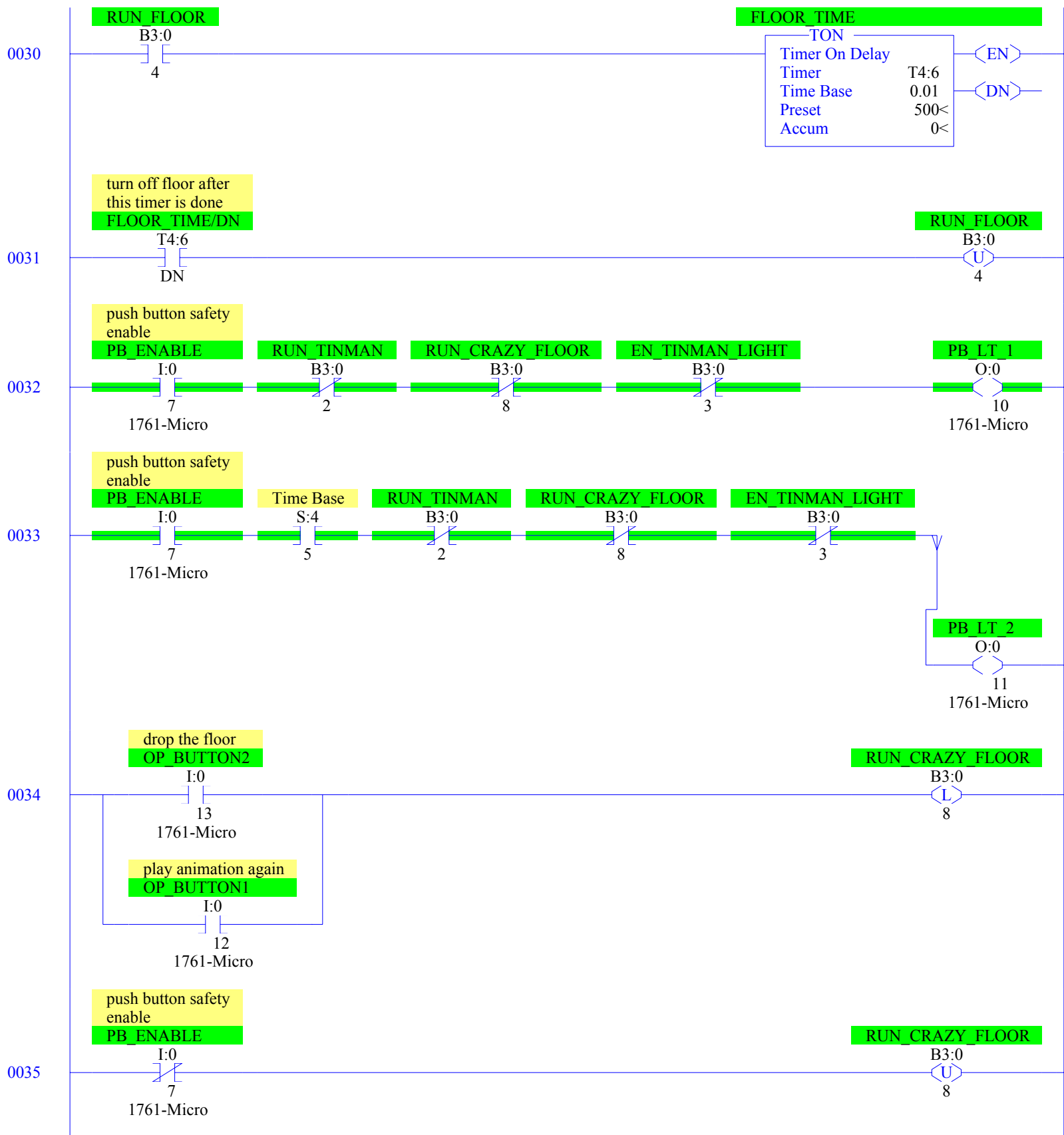


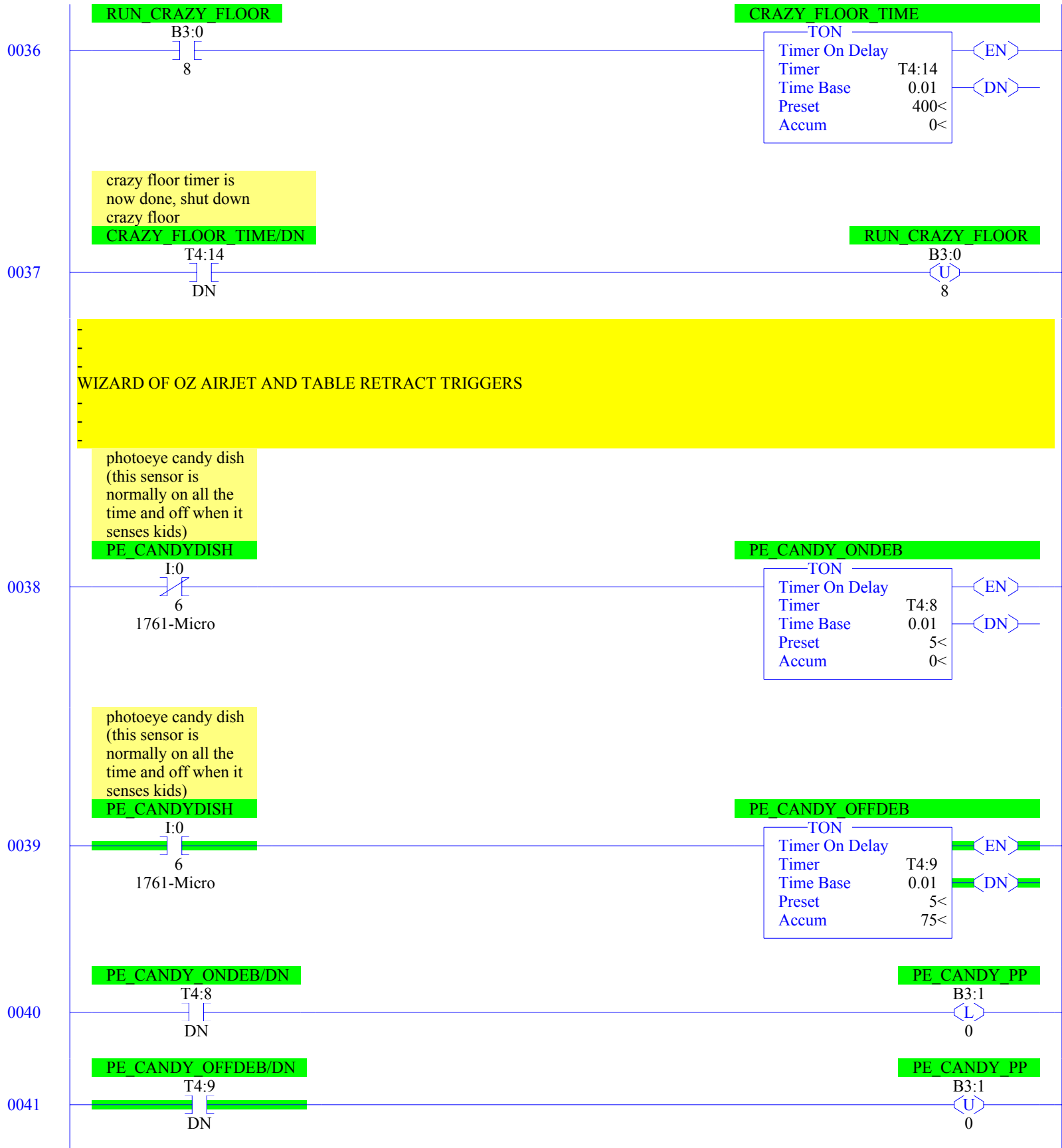


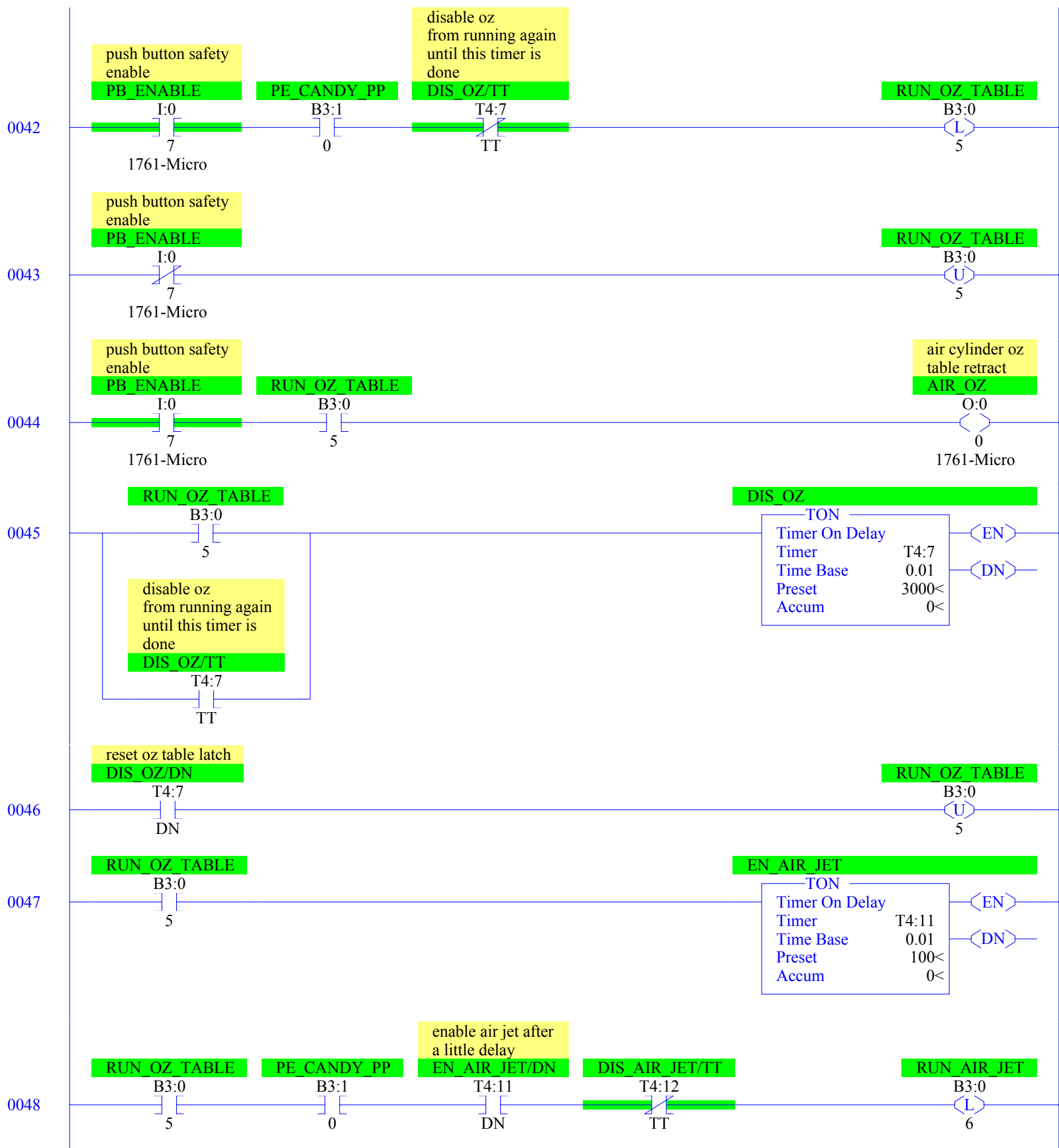


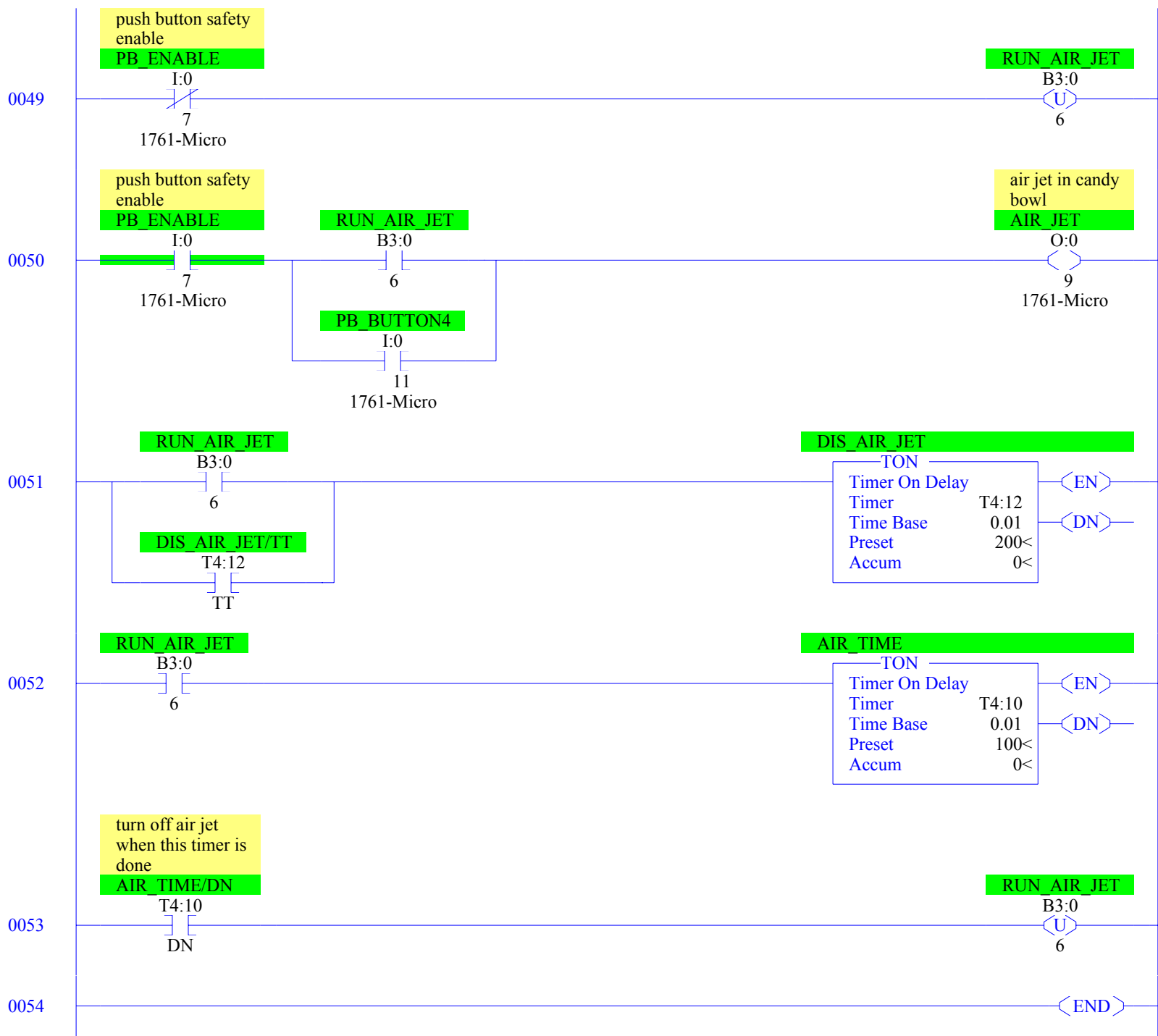








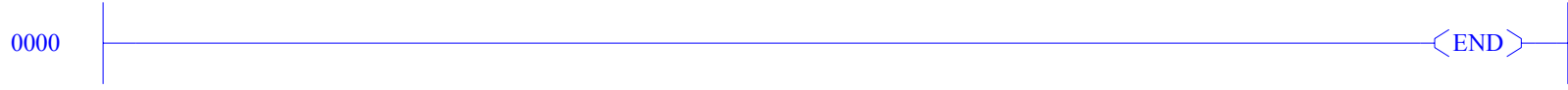


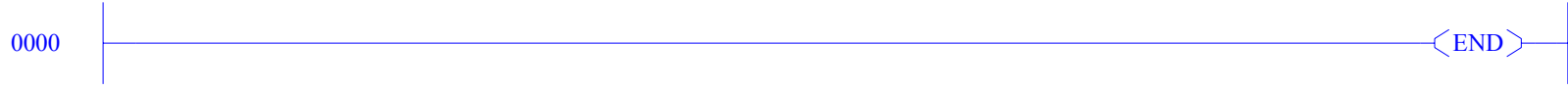


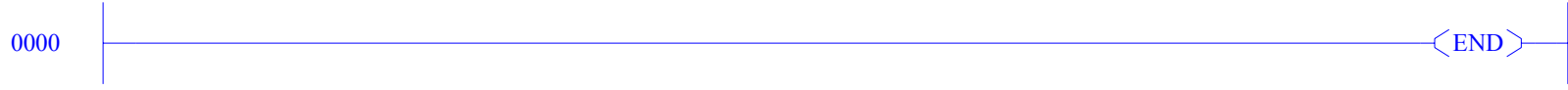
0000

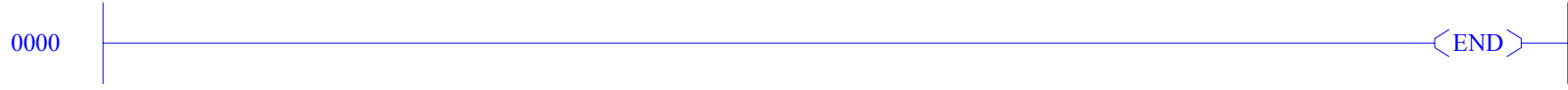
⟨END⟩









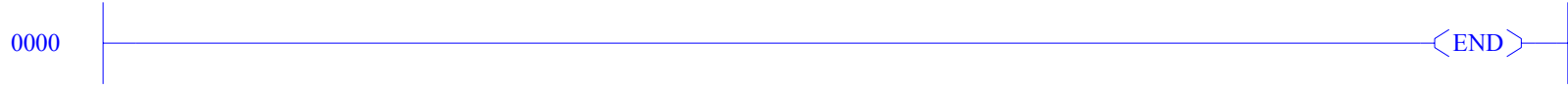


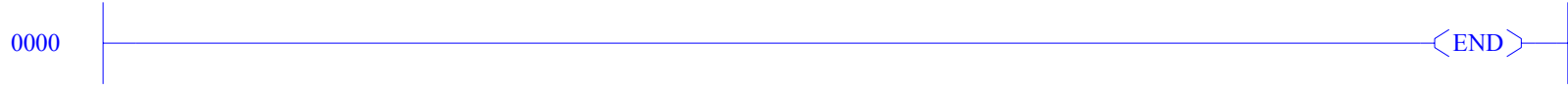
0000

⟨END⟩

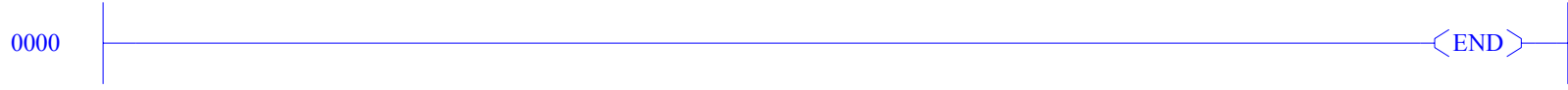
0000

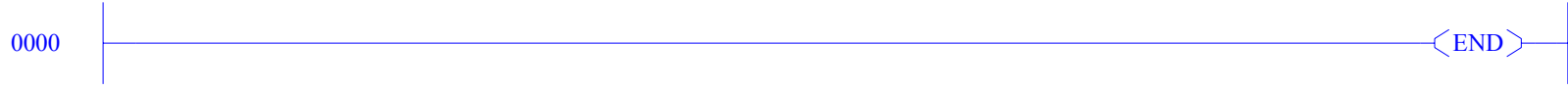
⟨END⟩

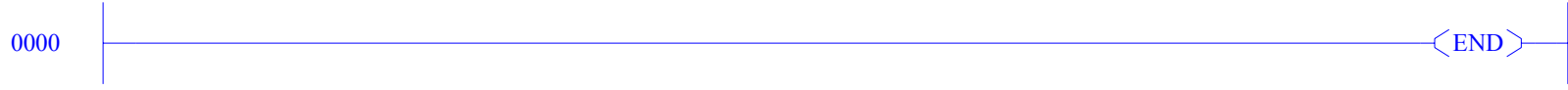


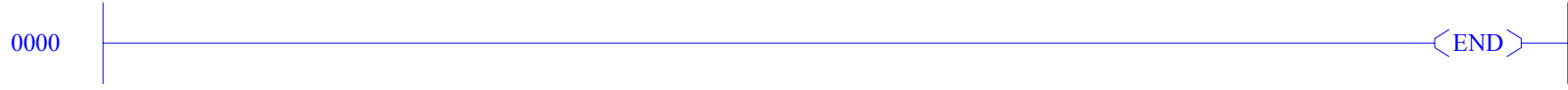












0000

⟨END⟩

Offset	15	14	13	12	11	10	9	8	7	6	5	4	3	2	1	0		
0:0.0	0	0	0	0	0	1	0	0	0	0	0	0	0	0	0	0	Bul.1761	MicroLogix 1000 DH-485/HDSlave

Offset	15	14	13	12	11	10	9	8	7	6	5	4	3	2	1	0				
I:0.0	0	0	0	0	0	0	0	0	1	1	1	1	0	0	0	0	Bul.1761	MicroLogix 1000	DH-485/HDSlave	
I:0.1	0	0	0	0	0	0	0	0	0	0	0	0	0	0	0	0	Bul.1761	MicroLogix 1000	DH-485/HDSlave	

**Main**

First Pass S:1/15 = No  
 Index Register S:24 = 0  
 Free Running Clock S:4 = 0011-0111-1110-0010

**Scan Times**

Maximum (x10 ms) S:22 = 1  
 Current (x10 ms) S:3 (low byte) = 0  
 Watchdog (x10 ms) S:3 (high byte) = 50

**Math**

Math Overflow Selected S:2/14 = 0  
 Overflow Trap S:5/0 = 0  
 Carry S:0/0 = 0  
 Overflow S:0/1 = 0  
 Zero Bit S:0/2 = 0  
 Sign Bit S:0/3 = 0

Math Register (lo word) S:13 = 0  
 Math Register (high word) S:14-S:13 = 0  
 Math Register (32 Bit) S:14-S:13 = 0

**Debug**

Suspend Code S:7 = 0

**Errors**

Extend I/O Configuration S:0/8 = 0  
 Fault Override At Power Up S:1/8 = 0  
 Startup Protection Fault S:1/9 = 0  
 Major Error Halt S:1/13 = 0  
 Overflow Trap S:5/0 = 0  
 Control Register Error S:5/2 = 0  
 Major Error Executing User  
 Fault Rtn. S:5/3 = 0  
 Retentive Data Lost S:5/8 = 0  
 Input Filter Selection Modified S:5/13 = 0

Major Error S:6 = 0h  
 Error Description:

**STI**

Pending Bit S:2/0 = 0  
 Enable Bit S:2/1 = 1  
 Executing Bit S:2/2 = 0  
 Overflow Bit S:5/10 = 0  
 Setpoint (x10ms) S:30 = 0

**Protection**

RUN Aways S:1/12 = 0  
 Deny Future Access S:1/14 = 1

**Forces**

Forces Enabled S:1/5 = Yes  
 Forces Installed S:1/6 = No



Offset	15	14	13	12	11	10	9	8	7	6	5	4	3	2	1	0	(Symbol)	Description
B3:0	0	0	0	0	0	0	0	0	0	0	0	0	0	0	0	0		
B3:1	0	0	0	0	0	0	0	0	0	0	0	0	0	0	0	0		
B3:2	0	0	0	0	0	0	0	0	0	0	0	0	0	0	0	0		
B3:3	0	0	0	0	0	0	0	0	0	0	0	0	0	0	0	0		
B3:4	0	0	0	0	0	0	0	0	0	0	0	0	0	0	0	0		
B3:5	0	0	0	0	0	0	0	0	0	0	0	0	0	0	0	0		
B3:6	0	0	0	0	0	0	0	0	0	0	0	0	0	0	0	0		
B3:7	0	0	0	0	0	0	0	0	0	0	0	0	0	0	0	0		
B3:8	0	0	0	0	0	0	0	0	0	0	0	0	0	0	0	0		
B3:9	0	0	0	0	0	0	0	0	0	0	0	0	0	0	0	0		
B3:10	0	0	0	0	0	0	0	0	0	0	0	0	0	0	0	0		
B3:11	0	0	0	0	0	0	0	0	0	0	0	0	0	0	0	0		
B3:12	0	0	0	0	0	0	0	0	0	0	0	0	0	0	0	0		
B3:13	0	0	0	0	0	0	0	0	0	0	0	0	0	0	0	0		
B3:14	0	0	0	0	0	0	0	0	0	0	0	0	0	0	0	0		
B3:15	0	0	0	0	0	0	0	0	0	0	0	0	0	0	0	0		
B3:16	0	0	0	0	0	0	0	0	0	0	0	0	0	0	0	0		
B3:17	0	0	0	0	0	0	0	0	0	0	0	0	0	0	0	0		
B3:18	0	0	0	0	0	0	0	0	0	0	0	0	0	0	0	0		
B3:19	0	0	0	0	0	0	0	0	0	0	0	0	0	0	0	0		
B3:20	0	0	0	0	0	0	0	0	0	0	0	0	0	0	0	0		
B3:21	0	0	0	0	0	0	0	0	0	0	0	0	0	0	0	0		
B3:22	0	0	0	0	0	0	0	0	0	0	0	0	0	0	0	0		
B3:23	0	0	0	0	0	0	0	0	0	0	0	0	0	0	0	0		
B3:24	0	0	0	0	0	0	0	0	0	0	0	0	0	0	0	0		
B3:25	0	0	0	0	0	0	0	0	0	0	0	0	0	0	0	0		
B3:26	0	0	0	0	0	0	0	0	0	0	0	0	0	0	0	0		
B3:27	0	0	0	0	0	0	0	0	0	0	0	0	0	0	0	0		
B3:28	0	0	0	0	0	0	0	0	0	0	0	0	0	0	0	0		
B3:29	0	0	0	0	0	0	0	0	0	0	0	0	0	0	0	0		
B3:30	0	0	0	0	0	0	0	0	0	0	0	0	0	0	0	0		
B3:31	0	0	0	0	0	0	0	0	0	0	0	0	0	0	0	0		

Offset	EN	TT	DN	BASE	PRE	ACC	(Symbol) Description
T4:0	0	0	0	.01 sec	4500	0	(DIS_TORNADO)
T4:1	0	0	0	.01 sec	900	0	(TORNADO_TIME)
T4:2	0	0	0	.01 sec	3000	0	(DIS_TRASHCAN)
T4:3	0	0	0	.01 sec	500	0	(TRASHCAN_TIME)
T4:4	0	0	0	.01 sec	250	0	(LIGHT_ONDLY_TINMAN)
T4:5	0	0	0	.01 sec	1750	0	(LIGHT_OFFDLY_TINMAN)
T4:6	0	0	0	.01 sec	500	0	(FLOOR_TIME)
T4:7	0	0	0	.01 sec	3000	0	(DIS_OZ)
T4:8	0	0	0	.01 sec	5	0	(PE_CANDY_ONDEB)
T4:9	1	0	1	.01 sec	5	75	(PE_CANDY_OFFDEB)
T4:10	0	0	0	.01 sec	100	0	(AIR_TIME)
T4:11	0	0	0	.01 sec	100	0	(EN AIR JET)
T4:12	0	0	0	.01 sec	200	0	(DIS AIR JET)
T4:13	0	0	0	.01 sec	100	0	(TINMAN_DLY)
T4:14	0	0	0	.01 sec	400	0	(CRAZY_FLOOR_TIME)
T4:15	0	0	0	.01 sec	0	0	
T4:16	0	0	0	.01 sec	0	0	
T4:17	0	0	0	.01 sec	0	0	
T4:18	0	0	0	.01 sec	0	0	
T4:19	0	0	0	.01 sec	0	0	
T4:20	0	0	0	.01 sec	0	0	
T4:21	0	0	0	.01 sec	0	0	
T4:22	0	0	0	.01 sec	0	0	
T4:23	0	0	0	.01 sec	0	0	
T4:24	0	0	0	.01 sec	0	0	
T4:25	0	0	0	.01 sec	0	0	
T4:26	0	0	0	.01 sec	0	0	
T4:27	0	0	0	.01 sec	0	0	
T4:28	0	0	0	.01 sec	0	0	
T4:29	0	0	0	.01 sec	0	0	
T4:30	0	0	0	.01 sec	0	0	
T4:31	0	0	0	.01 sec	0	0	
T4:32	0	0	0	.01 sec	0	0	
T4:33	0	0	0	.01 sec	0	0	
T4:34	0	0	0	.01 sec	0	0	
T4:35	0	0	0	.01 sec	0	0	
T4:36	0	0	0	.01 sec	0	0	
T4:37	0	0	0	.01 sec	0	0	
T4:38	0	0	0	.01 sec	0	0	
T4:39	0	0	0	.01 sec	0	0	

Offset	CU	CD	DN	OV	UN	UA	PRE	ACC	(Symbol) Description
C5:0	0	0	0	0	0	0	5	0	
C5:1	0	0	0	0	0	0	0	0	
C5:2	0	0	0	0	0	0	0	0	
C5:3	0	0	0	0	0	0	0	0	
C5:4	0	0	0	0	0	0	0	0	
C5:5	0	0	0	0	0	0	0	0	
C5:6	0	0	0	0	0	0	0	0	
C5:7	0	0	0	0	0	0	0	0	
C5:8	0	0	0	0	0	0	0	0	
C5:9	0	0	0	0	0	0	0	0	
C5:10	0	0	0	0	0	0	0	0	
C5:11	0	0	0	0	0	0	0	0	
C5:12	0	0	0	0	0	0	0	0	
C5:13	0	0	0	0	0	0	0	0	
C5:14	0	0	0	0	0	0	0	0	
C5:15	0	0	0	0	0	0	0	0	
C5:16	0	0	0	0	0	0	0	0	
C5:17	0	0	0	0	0	0	0	0	
C5:18	0	0	0	0	0	0	0	0	
C5:19	0	0	0	0	0	0	0	0	
C5:20	0	0	0	0	0	0	0	0	
C5:21	0	0	0	0	0	0	0	0	
C5:22	0	0	0	0	0	0	0	0	
C5:23	0	0	0	0	0	0	0	0	
C5:24	0	0	0	0	0	0	0	0	
C5:25	0	0	0	0	0	0	0	0	
C5:26	0	0	0	0	0	0	0	0	
C5:27	0	0	0	0	0	0	0	0	
C5:28	0	0	0	0	0	0	0	0	
C5:29	0	0	0	0	0	0	0	0	
C5:30	0	0	0	0	0	0	0	0	
C5:31	0	0	0	0	0	0	0	0	

Offset	EN	EU	DN	EM	ER	UL	IN	FD	LEN	POS	(Symbol) Description
R6:0	0	0	0	0	0	0	0	0	0	0	
R6:1	0	0	0	0	0	0	0	0	0	0	
R6:2	0	0	0	0	0	0	0	0	0	0	
R6:3	0	0	0	0	0	0	0	0	0	0	
R6:4	0	0	0	0	0	0	0	0	0	0	
R6:5	0	0	0	0	0	0	0	0	0	0	
R6:6	0	0	0	0	0	0	0	0	0	0	
R6:7	0	0	0	0	0	0	0	0	0	0	
R6:8	0	0	0	0	0	0	0	0	0	0	
R6:9	0	0	0	0	0	0	0	0	0	0	
R6:10	0	0	0	0	0	0	0	0	0	0	
R6:11	0	0	0	0	0	0	0	0	0	0	
R6:12	0	0	0	0	0	0	0	0	0	0	
R6:13	0	0	0	0	0	0	0	0	0	0	
R6:14	0	0	0	0	0	0	0	0	0	0	
R6:15	0	0	0	0	0	0	0	0	0	0	

Data File N7 (dec) -- INTEGER

Offset	0	1	2	3	4	5	6	7	8	9
N7:0	0	0	0	0	0	0	0	0	0	0
N7:10	0	0	0	0	0	0	0	0	0	0
N7:20	0	0	0	0	0	0	0	0	0	0
N7:30	0	0	0	0	0	0	0	0	0	0
N7:40	0	0	0	0	0	0	0	0	0	0
N7:50	0	0	0	0	0	0	0	0	0	0
N7:60	0	0	0	0	0	0	0	0	0	0
N7:70	0	0	0	0	0	0	0	0	0	0
N7:80	0	0	0	0	0	0	0	0	0	0
N7:90	0	0	0	0	0	0	0	0	0	0
N7:100	0	0	0	0	0	0	0	0	0	0

Address (Symbol) = Value [Description]

## Address/Symbol Database

Address	Symbol	Scope	Description
B3:0/0	RUN_TORNADO	Global	
B3:0/1	RUN_TRASHCAN	Global	
B3:0/2	RUN_TINMAN	Global	
B3:0/3	EN_TINMAN_LIGHT	Global	
B3:0/4	RUN_FLOOR	Global	
B3:0/5	RUN_OZ_TABLE	Global	
B3:0/6	RUN_AIR_JET	Global	
B3:0/7	WAIT_TINMAN	Global	
B3:0/8	RUN_CRAZY_FLOOR	Global	
B3:0/15	ALWAYS_OFF	Global	
B3:1/0	PE_CANDY_PP	Global	
B3:1/1	PE_CANDY_OFFDLY	Global	
I:0/4	PE_ENTRY	Global	photoeye at entry (this sensor is normally on all the time and off when it senses kids)
I:0/5	PE_TRASHCAN	Global	photoeye at trashcan (this sensor is normally on all the time and off when it senses kids)
I:0/6	PE_CANDYDISH	Global	photoeye candy dish (this sensor is normally on all the time and off when it senses kids)
I:0/7	PB_ENABLE	Global	push button safety enable
I:0/8	PB_BUTTON1	Global	
I:0/9	PB_BUTTON2	Global	
I:0/10	PB_BUTTON3	Global	
I:0/11	PB_BUTTON4	Global	
I:0/12	OP_BUTTON1	Global	play animation again
I:0/13	OP_BUTTON2	Global	drop the floor
O:0/0	AIR_OZ	Global	air cylinder oz table retract
O:0/1	SOUND_TORNADO	Global	sound module tornado and yellow brick road
O:0/2	SOUND_TRASHCAN	Global	sound module at trash can
O:0/3	SOUND_ANIM	Global	sound module animinatronics tin man and scarecrow
O:0/4	LIGHT_TINMAN	Global	light to light up tinman stage area
O:0/5	AIR_FLOOR	Global	1/2 floor drop
O:0/6	FAN	Global	tornado fan and fog machine
O:0/7			
O:0/8	AIR_TRASHCAN	Global	air cylinder trash can
O:0/9	AIR_JET	Global	air jet in candy bowl
O:0/10	PB_LT_1	Global	
O:0/11	PB_LT_2	Global	
S:0			Arithmetic Flags
S:0/0			Processor Arithmetic Carry Flag
S:0/1			Processor Arithmetic Underflow/ Overflow Flag
S:0/2			Processor Arithmetic Zero Flag
S:0/3			Processor Arithmetic Sign Flag
S:1			Processor Mode Status/ Control
S:1/0			Processor Mode Bit 0
S:1/1			Processor Mode Bit 1
S:1/2			Processor Mode Bit 2
S:1/3			Processor Mode Bit 3
S:1/4			Processor Mode Bit 4
S:1/5			Forces Enabled
S:1/6			Forces Present
S:1/7			Comms Active
S:1/8			Fault Override at Powerup
S:1/9			Startup Protection Fault
S:1/10			Load Memory Module on Memory Error
S:1/11			Load Memory Module Always
S:1/12			Load Memory Module and RUN
S:1/13			Major Error Halted
S:1/14			Access Denied
S:1/15			First Pass
S:2/0			STI Pending
S:2/1			STI Enabled
S:2/2			STI Executing
S:2/3			Index Addressing File Range
S:2/4			Saved with Debug Single Step
S:2/5			DH-485 Incoming Command Pending
S:2/6			DH-485 Message Reply Pending
S:2/7			DH-485 Outgoing Message Command Pending
S:2/12			
S:2/15			Comms Servicing Selection
S:3			Current Scan Time/ Watchdog Scan Time
S:4			Time Base
S:4/2			
S:4/4			
S:4/8			
S:5/0			Overflow Trap
S:5/2			Control Register Error
S:5/3			Major Err Detected Executing UserFault Routine
S:5/4			M0-M1 Referenced on Disabled Slot
S:5/8			Memory Module Boot
S:5/9			Memory Module Password Mismatch
S:5/10			STI Overflow
S:5/11			Battery Low
S:6			Major Error Fault Code
S:7			Suspend Code
S:8			Suspend File
S:9			Active Nodes
S:10			Active Nodes
S:11			I/O Slot Enables

## Address/Symbol Database

Address	Symbol	Scope	Description
S:12			I/O Slot Enables
S:13			Math Register
S:14			Math Register
S:15			Node Address/ Baud Rate
S:16			Debug Single Step Rung
S:17			Debug Single Step File
S:18			Debug Single Step Breakpoint Rung
S:19			Debug Single Step Breakpoint File
S:20			Debug Fault/ Powerdown Rung
S:21			Debug Fault/ Powerdown File
S:22			Maximum Observed Scan Time
S:23			Average Scan Time
S:24			Index Register
S:25			I/O Interrupt Pending
S:26			I/O Interrupt Pending
S:27			I/O Interrupt Enabled
S:28			I/O Interrupt Enabled
S:29			User Fault Routine File Number
S:30			STI Setpoint
S:31			STI File Number
S:32			I/O Interrupt Executing
S:33			Extended Proc Status Control Word
S:33/0			Incoming Command Pending
S:33/1			Message Reply Pending
S:33/2			Outgoing Message Command Pending
S:33/3			Selection Status User/DF1
S:33/4			Communicat Active
S:33/5			Communicat Servicing Selection
S:33/6			Message Servicing Selection Channel 0
S:33/7			Message Servicing Selection Channel 1
S:33/8			Interrupt Latency Control Flag
S:33/9			Scan Toggle Flag
S:33/10			Discrete Input Interrupt Reconfigur Flag
S:33/11			Online Edit Status
S:33/12			Online Edit Status
S:33/13			Scan Time Timebase Selection
S:33/14			DTR Control Bit
S:33/15			DTR Force Bit
S:34			Pass-thru Disabled
S:34/0			Pass-Thru Disabled Flag
S:34/1			DH+ Active Node Table Enable Flag
S:34/2			Floating Point Math Flag Disable,F1
S:35			Last 1 ms Scan Time
S:36			Extended Minor Error Bits
S:36/8			DII Lost
S:36/9			STI Lost
S:36/10			Memory Module Data File Overwrite Protection
S:37			Clock Calendar Year
S:38			Clock Calendar Month
S:39			Clock Calendar Day
S:40			Clock Calendar Hours
S:41			Clock Calendar Minutes
S:42			Clock Calendar Seconds
S:43			STI Interrupt Time
S:44			I/O Event Interrupt Time
S:45			DII Interrupt Time
S:46			Discrete Input Interrupt- File Number
T4:0	DIS_TORNADO	Global	
T4:0/DN			
T4:0/TT			disable tornado from running again until this timer is done
T4:1	TORNADO_TIME	Global	
T4:1/DN			shut down tornado after this timer is done
T4:2	DIS_TRASHCAN	Global	
T4:2/TT			disable trashcan from running again until this timer is done
T4:3	TRASHCAN_TIME	Global	
T4:3/DN			shut down trashcan after this timer is done
T4:4	LIGHT_ONDLY_TINMAN	Global	
T4:4/DN			enable the overhead tinman light when this timer is done (a time delay)
T4:5	LIGHT_OFFDLY_TINMAN	Global	
T4:5/DN			turn off overhead light in tinman area after this timer is done
T4:6	FLOOR_TIME	Global	
T4:6/DN			turn off floor after this timer is done
T4:7	DIS_OZ	Global	
T4:7/DN			reset oz table latch
T4:7/TT			disable oz from running again until this timer is done
T4:8	PE_CANDY_ONDEB	Global	
T4:8/DN			
T4:9	PE_CANDY_OFFDEB	Global	
T4:10	AIR_TIME	Global	
T4:10/DN			turn off air jet when this timer is done
T4:11	EN_AIR_JET	Global	
T4:11/DN			enable air jet after a little delay
T4:12	DIS_AIR_JET	Global	
T4:12/TT			
T4:13	TINMAN_DLY	Global	



## Address/Symbol Database

---

Address	Symbol	Scope	Description
T4:13/DN			delay after trashcan prop then run tinman animintronics
T4:14	CRAZY_FLOOR_TIME	Global	
T4:14/DN			crazy floor timer is now done, shut down crazy floor

Address	Instruction	Description
---------	-------------	-------------

Group\_Name Description